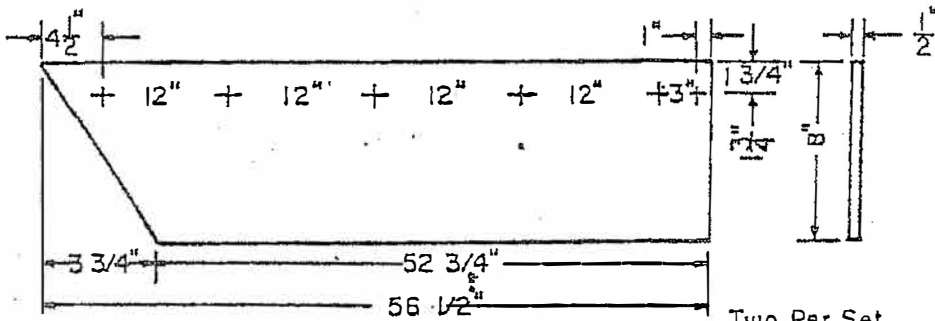


Hole Punching: All cutting edges shall be One Per Set punched to accept #3 countersunk head, squareneck (plow) bolts. 14 Holes

CODE NO. 94

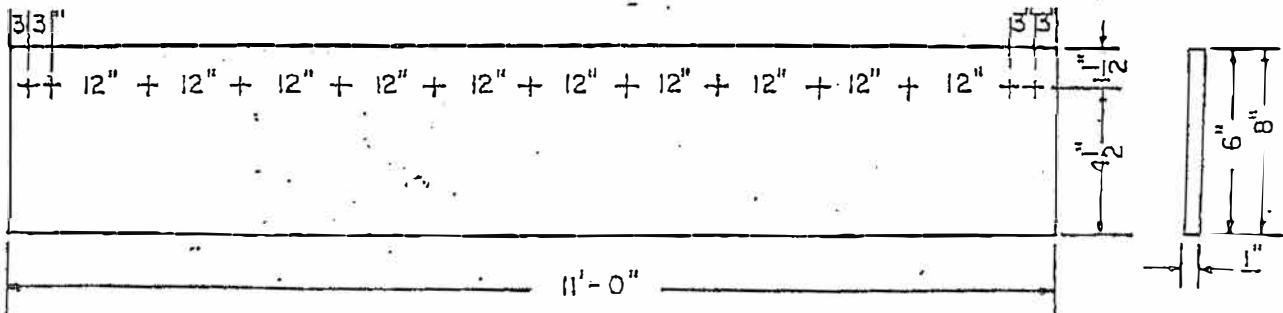


Two Per Set 6 Holes

Gledhill Model 482.5 "V" Plow, Gledhill Plow-Model 488-5V2 "V" Plow

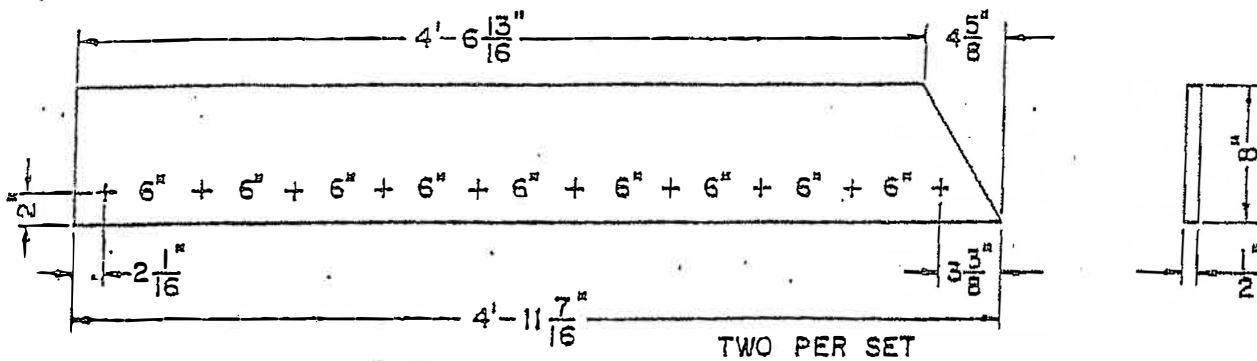
CODE NO. 97

Hole Punching: All cutting edges shall be punched to accept #3 countersunk head, squareneck (plow) bolts.



Hole Punching: All cutting edges shall be One Per Set punched to accept #3 countersunk head, squareneck (plow) bolts. 13 Holes

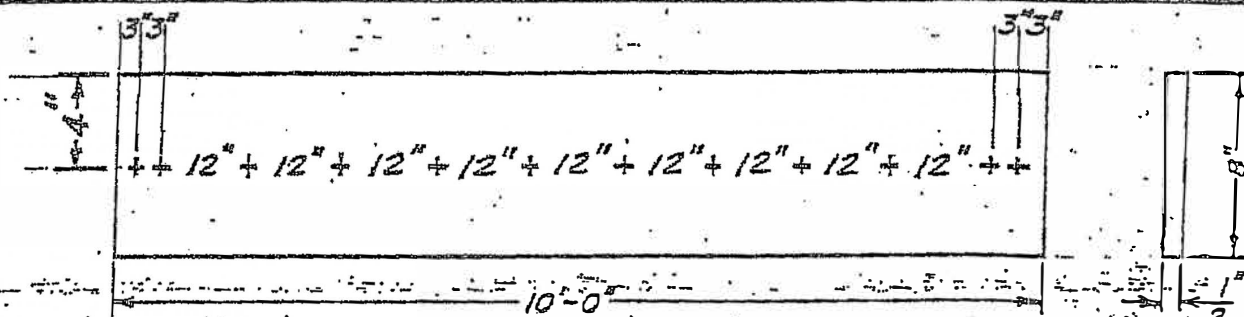
CODE NO. 98



CODE NO. 118

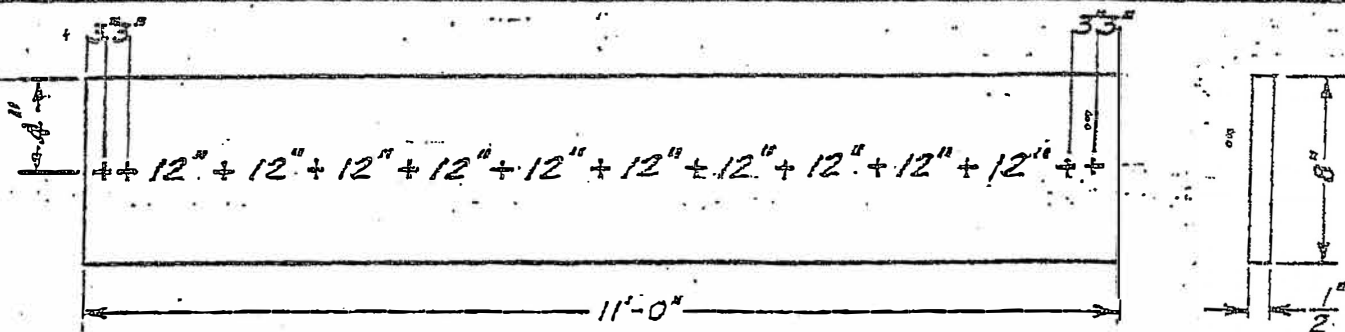
FLINK MODEL 265A "V" PLOW

10 HOLES



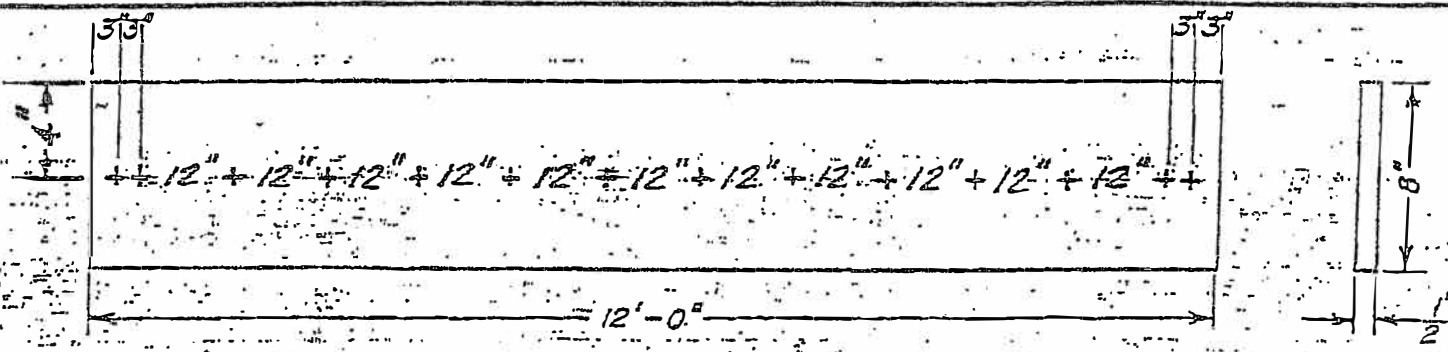
CODE NO. 119

12 Holes $11/16"$ sq.



CODE NO. 120

13 Holes $11/16"$ sq.



CODE NO. 121

14 Holes $11/16"$ sq.